

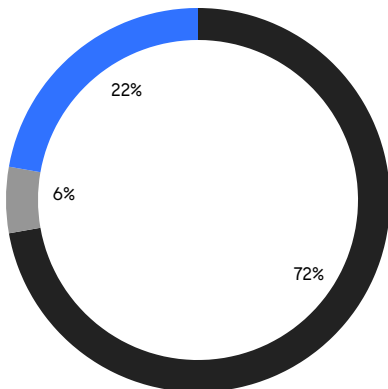
# BROOKLYN WEEKLY LUXURY REPORT



568 1ST ST

RESIDENTIAL CONTRACTS  
\$2 MILLION AND UP

- NORTHWEST BROOKLYN
- NORTH BROOKLYN
- EAST BROOKLYN



18

CONTRACTS SIGNED  
THIS WEEK

\$60,059,000

TOTAL CONTRACT VOLUME

The Brooklyn luxury real estate market, defined as all properties priced \$2M and above, saw 18 contracts signed this week, made up of 9 condos, and 9 houses. The previous week saw 17 deals. For more information or data, please reach out to a Compass agent.

**\$3,336,612**

AVERAGE ASKING PRICE

**\$2,950,000**

MEDIAN ASKING PRICE

**\$1,395**

AVERAGE PPSF

**0%**

AVERAGE DISCOUNT

**\$60,059,000**

TOTAL VOLUME

**119**

AVERAGE DAYS ON MARKET

178 Garfield Place in Park Slope entered contract this week, with a last asking price of \$5,995,000. Built in the 1880s, this townhouse spans 4,424 square feet with 5 beds and 3 full baths. It features an open double parlor with high ceilings, original shutters, original pine floors, limestone mantels, a chef's kitchen with high-end appliances, a landscaped and irrigated south-facing garden, an 800 square foot cellar, a large private terrace, and much more.

Also signed this week was Unit 5B at 171 Columbia Heights in Brooklyn Heights, with a last asking price of \$5,900,000. Originally built in the early 1900s, this condo unit spans 2,419 square feet with 4 beds and 3 full baths. It features a gourmet kitchen with custom cabinetry and high-end appliances, white oak hardwood floors throughout, paneled ceilings, abundant views, and much more. The building provides a rooftop terrace, a fitness center, 24-hour security, an elegant lobby, and many other amenities.

**9**

CONDO DEAL(S)

**0**

CO-OP DEAL(S)

**9**

TOWNHOUSE DEAL(S)

**\$3,366,667**

AVERAGE ASKING PRICE

**\$0**

AVERAGE ASKING PRICE

**\$3,306,556**

AVERAGE ASKING PRICE

**\$2,950,000**

MEDIAN ASKING PRICE

**\$0**

MEDIAN ASKING PRICE

**\$2,650,000**

MEDIAN ASKING PRICE

**\$1,809**

AVERAGE PPSF

**\$982**

AVERAGE PPSF

**1,848**

AVERAGE SQFT

**3,378**

AVERAGE SQFT



### 178 GARFIELD PL

Park Slope

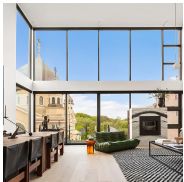
TYPE	TOWNHOUSE	STATUS	CONTRACT	ASK	\$5,995,000	INITIAL	\$5,995,000
SQFT	4,424	PPSF	\$1,356	BEDS	5	BATHS	3.5
FEES	\$1,378	DOM	37				



### 171 COLUMBIA HEIGHTS #5B

Brooklyn Heights

TYPE	CONDO	STATUS	CONTRACT	ASK	\$5,900,000	INITIAL	\$5,900,000
SQFT	2,419	PPSF	\$2,440	BEDS	4	BATHS	3.5
FEES	\$7,662	DOM	40				



### 201 NORTH 11TH ST #3

Williamsburg

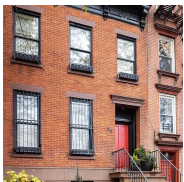
TYPE	CONDO	STATUS	CONTRACT	ASK	\$4,750,000	INITIAL	\$4,750,000
SQFT	2,105	PPSF	\$2,257	BEDS	4	BATHS	2.5
FEES	\$2,875	DOM	40				



### 15 SOUTH ELLIOTT PL

Fort Greene

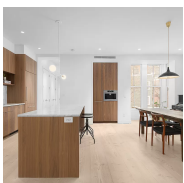
TYPE	TOWNHOUSE	STATUS	CONTRACT	ASK	\$4,650,000	INITIAL	\$4,650,000
SQFT	3,100	PPSF	\$1,500	BEDS	5	BATHS	3.5
FEES	\$683	DOM	26				



### 96 BUTLER ST

Boerum Hill

TYPE	TOWNHOUSE	STATUS	CONTRACT	ASK	\$4,575,000	INITIAL	\$4,575,000
SQFT	4,555	PPSF	\$1,005	BEDS	4	BATHS	3.5
FEES	\$1,341	DOM	27				

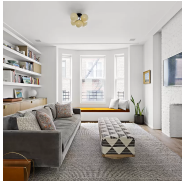


### 113 COLUMBIA HEIGHTS #3

Brooklyn Heights

TYPE	CONDO	STATUS	CONTRACT	ASK	\$3,395,000	INITIAL	N/A
SQFT	1,560	PPSF	\$2,177	BEDS	3	BATHS	2
FEES	\$1,975	DOM	N/A				

Compass is a licensed real estate broker and abides by Equal Housing Opportunity laws. All material presented herein is intended for informational purposes only. Information is compiled from sources deemed reliable but is subject to errors, omissions, changes in price, condition, sale, or withdrawal without notice. No statement is made as to the accuracy of any description. All measurements and square footages are approximate. This is not intended to solicit property already listed. Nothing herein shall be construed as legal, accounting or other professional advice outside the realm of real estate brokerage.



### 171 COLUMBIA HEIGHTS #3B

Brooklyn Heights

TYPE	CONDO	STATUS	CONTRACT	ASK	\$2,995,000	INITIAL	N/A
SQFT	1,594	PPSF	\$1,879	BEDS	3	BATHS	2
FEES	\$4,821	DOM	N/A				



### 226 MACON ST

Bedford Stuyvesant

TYPE	TOWNHOUSE	STATUS	CONTRACT	ASK	\$2,994,000	INITIAL	\$3,195,000
SQFT	3,852	PPSF	\$778	BEDS	6	BATHS	4
FEES	\$416	DOM	128				



### 11 HOYT ST #55B

Downtown Brooklyn

TYPE	CONDO	STATUS	CONTRACT	ASK	\$2,950,000	INITIAL	\$3,225,000
SQFT	1,756	PPSF	\$1,680	BEDS	3	BATHS	3
FEES	\$4,763	DOM	707				



### 442 3RD ST #1

Park Slope

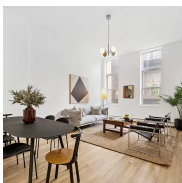
TYPE	CONDO	STATUS	CONTRACT	ASK	\$2,950,000	INITIAL	\$2,950,000
SQFT	2,402	PPSF	\$1,229	BEDS	2	BATHS	2.5
FEES	\$1,241	DOM	29				



### 1222 CARROLL ST

Crown Heights

TYPE	TOWNHOUSE	STATUS	CONTRACT	ASK	\$2,650,000	INITIAL	\$2,650,000
SQFT	4,380	PPSF	\$606	BEDS	7	BATHS	6
FEES	\$1,386	DOM	23				



### 25 BERGEN ST #1A

Cobble Hill

TYPE	CONDO	STATUS	CONTRACT	ASK	\$2,495,000	INITIAL	\$2,495,000
SQFT	1,686	PPSF	\$1,480	BEDS	3	BATHS	2
FEES	\$2,473	DOM	126				

Compass is a licensed real estate broker and abides by Equal Housing Opportunity laws. All material presented herein is intended for informational purposes only. Information is compiled from sources deemed reliable but is subject to errors, omissions, changes in price, condition, sale, or withdrawal without notice. No statement is made as to the accuracy of any description. All measurements and square footages are approximate. This is not intended to solicit property already listed. Nothing herein shall be construed as legal, accounting or other professional advice outside the realm of real estate brokerage.



### 11 HOYT ST #52H

Downtown Brooklyn

TYPE	CONDO	STATUS	CONTRACT	ASK	\$2,450,000	INITIAL	\$2,450,000
SQFT	1,571	PPSF	\$1,560	BEDS	3	BATHS	3
FEES	\$4,166	DOM	24				



### 350 BUTLER ST #8A

Park Slope

TYPE	CONDO	STATUS	CONTRACT	ASK	\$2,415,000	INITIAL	\$2,350,000
SQFT	1,531	PPSF	\$1,578	BEDS	3	BATHS	2.5
FEES	\$2,252	DOM	455				



### 773A MONROE ST

Bedford Stuyvesant

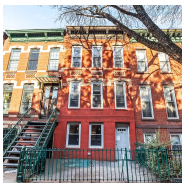
TYPE	TOWNHOUSE	STATUS	CONTRACT	ASK	\$2,295,000	INITIAL	\$2,295,000
SQFT	2,650	PPSF	\$867	BEDS	5	BATHS	3
FEES	\$386	DOM	27				



### 726A JEFFERSON AVE

Bedford Stuyvesant

TYPE	TOWNHOUSE	STATUS	CONTRACT	ASK	\$2,250,000	INITIAL	N/A
SQFT	2,974	PPSF	\$757	BEDS	3	BATHS	3.5
FEES	\$266	DOM	N/A				



### 615 PRESIDENT ST

Park Slope

TYPE	TOWNHOUSE	STATUS	CONTRACT	ASK	\$2,250,000	INITIAL	\$2,250,000
SQFT	2,105	PPSF	\$1,069	BEDS	5	BATHS	3
FEES	\$378	DOM	80				



### 197 13TH ST

Gowanus

TYPE	TOWNHOUSE	STATUS	CONTRACT	ASK	\$2,100,000	INITIAL	\$2,100,000
SQFT	2,355	PPSF	\$892	BEDS	4	BATHS	3.5
FEES	\$269	DOM	13				

Compass is a licensed real estate broker and abides by Equal Housing Opportunity laws. All material presented herein is intended for informational purposes only. Information is compiled from sources deemed reliable but is subject to errors, omissions, changes in price, condition, sale, or withdrawal without notice. No statement is made as to the accuracy of any description. All measurements and square footages are approximate. This is not intended to solicit property already listed. Nothing herein shall be construed as legal, accounting or other professional advice outside the realm of real estate brokerage.